

Product datasheet

PSMA MOUSE MONOCLONAL ANTIBODY (17G1)

SKU: MM-0276-P

100 µg

OVERVIEW

Clonality:

Monoclonal

Host:

Mouse

Reactivity:

Human, Canine (Not reactive to mouse or rat PSMA homologue)

Application:

WB, ELISA, IF, IHC

Target:

PSMA

Target background:

The prostate-specific membrane antigen (PSMA), also known as Glutamate carboxypeptidase II (GCPII) or N-acetyl -L-aspartyl-L-glutamate peptidase I (NAALDAse I), is an integral type II cell-surface zinc-metalloprotease of 750 amino acids. PSMA is predominantly expressed in epithelial cells of prostate tissue, and also found in the brain, kidney tubules, small bowel, and in endothelial cells in certain solid tumor neovasculature. Its expression in normal and malignant prostate correlates with tumor aggressiveness, with highest levels in hormone refractory and metastatic disease.

Target alias:

Glutamate carboxypeptidase II (GCPII), N-acetyl -L-aspartyl-L-glutamate peptidase I (NAALDAse I)

Immunogen:

Synthetic peptide of human PSMA comprised of amino acids 490-500.

Specificity:

The antibody recognizes the extracellular residues 490-500 of human PSMA.

Clone ID:

17G1

Isotype:

IgG1 kappa

Preservative:

None

Format:

Lyophilized protein G purified in PBS pH7.4

Recommend starting dilution:

Reconstitute with deionized water. Optimal dilution has to be determined by the user.

Limitations:

Research Use Only

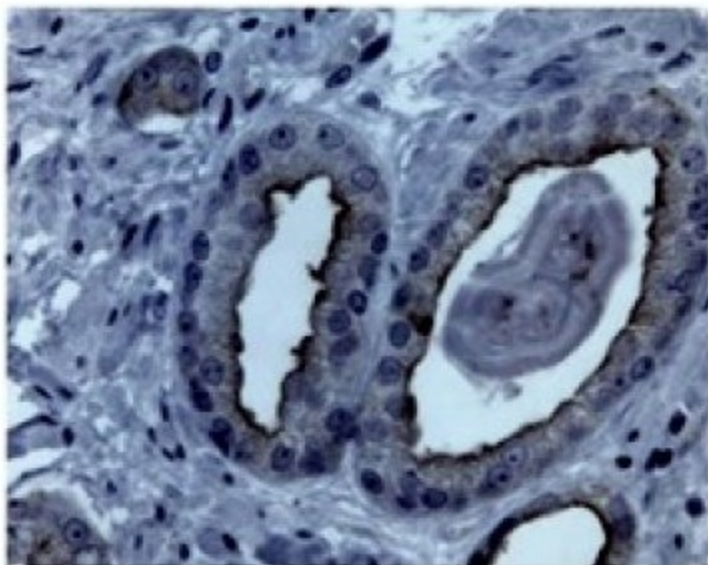
References:

1.-Moffett S - Preparation and characterization of new anti-PSMA monoclonal antibodies with potential clinical use.

Storage:

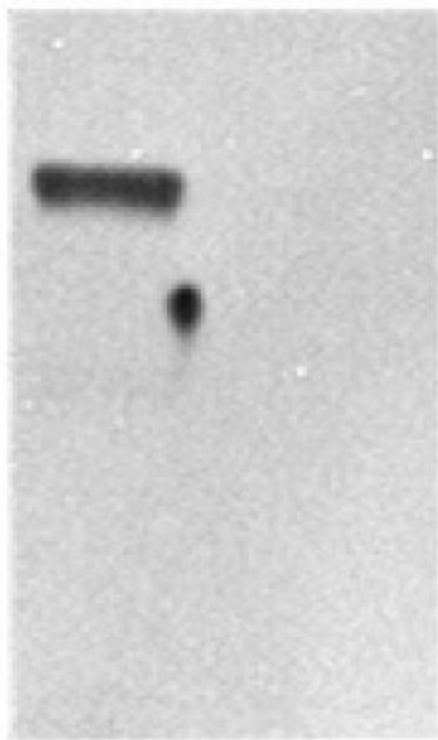
Lyophilized antibodies can be kept at 4°C for up to 3 months and should be kept at -20°C for long-term storage (2 years). To avoid freeze-thaw cycles, reconstituted antibodies should be aliquoted before freezing for long-term (1 year) storage (-80°C) or kept at 4°C for short-term usage (2 months). For maximum recovery of product, centrifuge the original vial prior to removing the cap. Further dilutions can be made with the assay buffer. After the maximum long-term storage period (2 years lyophilized or 1 year reconstituted) antibodies should be tested in your assay with a standard sample to verify if you have noticed any decrease in their efficacy.

Image:



Immunostaining of human prostate cancer tissue with 17G1 antibody.

LNCaP PC3



-100kDa

Western blot analysis of PSMA expressing LNCaP and negative control PC3 prostate cancer cell lines.